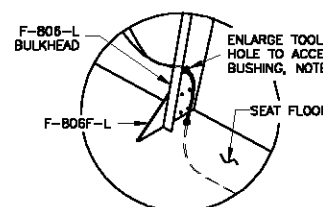
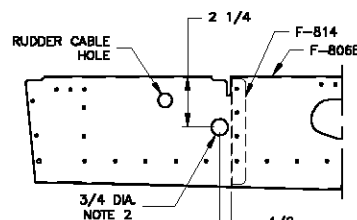
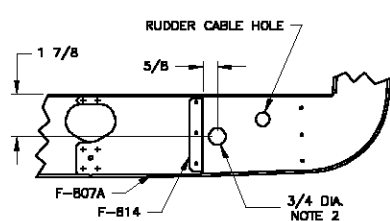
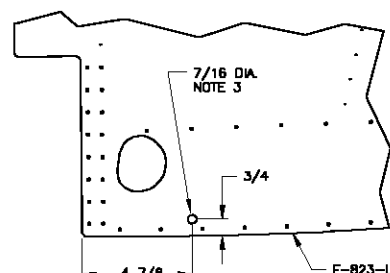
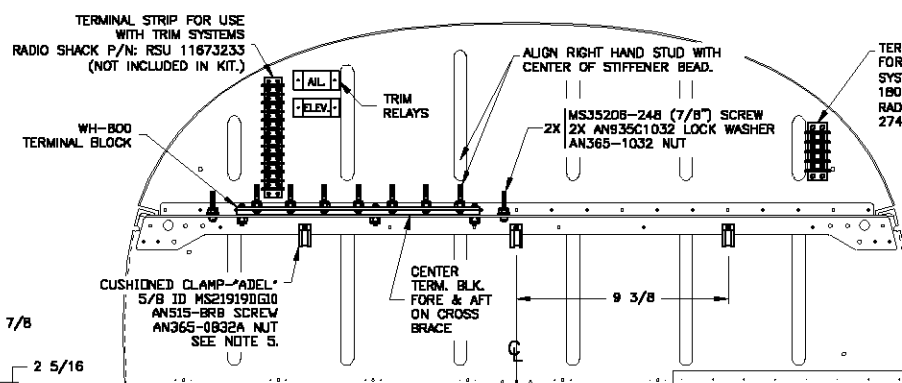
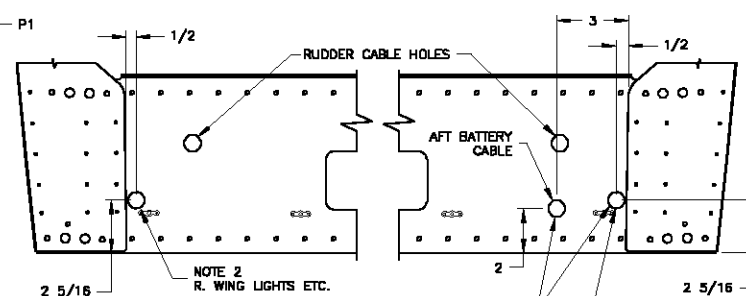
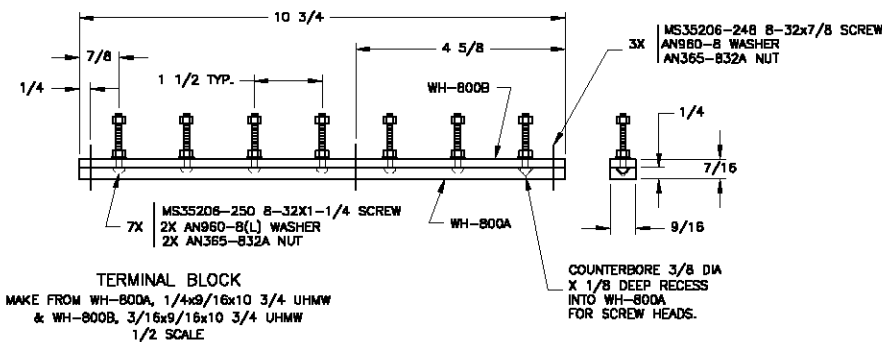
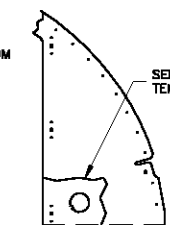
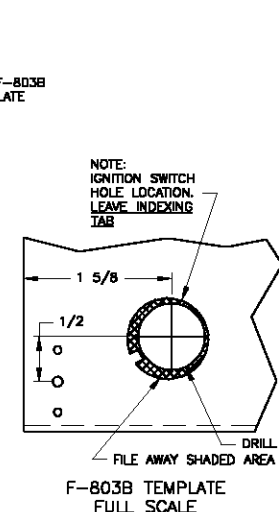
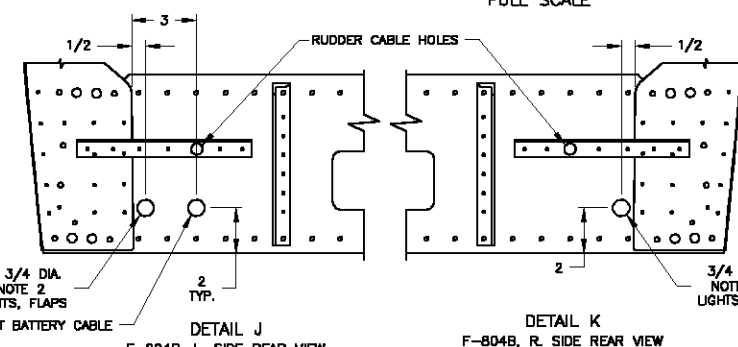
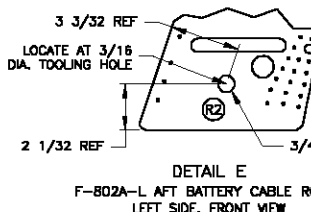
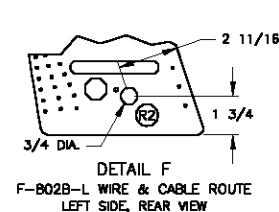
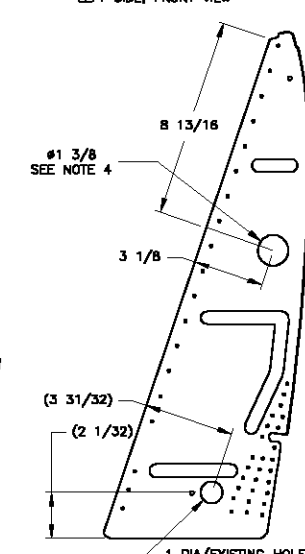
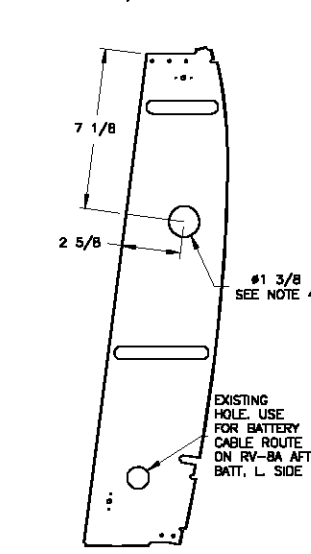
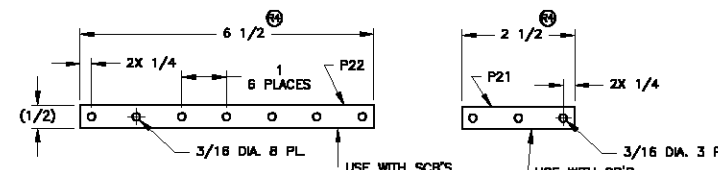
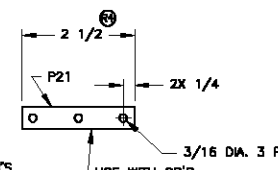
DETAIL A
(FWD MOUNTED BATTERY)
R. SIDE FRONT VIEWDETAIL B
(AFT MOUNTED BATTERY)
L. SIDE FRONT VIEWDETAIL N
F-806-L P8, P9 FLAP WIRE ROUTINGDETAIL P
F-806B AFT BATTERY CABLE ROUTE
LEFT SIDE, REAR VIEWDETAIL Q
F-807A AFT BATTERY CABLE ROUTE
LEFT SIDE, FRONT VIEWDETAIL R
F-823-L WING LIGHT WIRING ROUTE
L3, L5, L7 ROUTING, LOOKING INBOARD.
F-823-R SIMILAR (L2, L4, L6).DETAIL C
F-868A/B BAGGAGE PANEL
REAR VIEWDETAIL G
F-804A, R. SIDE FRONT VIEWDETAIL H
F-804A, L. SIDE FRONT VIEWDETAIL S
ADEL CLAMP INSTALLATION
(MOUNT ON OUTED SIDE OF SEAT RIB)DETAIL D
F-803B RIGHT INST. SUBPANEL
REAR VIEWDETAIL K
F-804B, R. SIDE REAR VIEWDETAIL J
F-804B, L. SIDE REAR VIEWDETAIL E
F-802A-L AFT BATTERY CABLE ROUTE
LEFT SIDE, FRONT VIEWDETAIL F
F-802B-L WIRE & CABLE ROUTE
LEFT SIDE, REAR VIEWDETAIL L
F-802B-R, R. SIDE, REAR VIEW
RV-8 ONLYDETAIL M
F-802R-R, R. SIDE, REAR VIEW
RV-8A ONLY

P22 COPPER BUSS BAR



P21 BUSS BAR

NOTES:

- MS21919WDG8 ADEL CUSHION CLAMP, 4 PLACES.
- S8750-10 3/4 O.D. X 5/8 I.D. SNAP BUSHING.
- S8437-4 7/16 O.D. X 1/4 I.D. SNAP BUSHING.
- SLIT SOFT VINYL TUBING TO COVER HOLE EDGE.
- CLAMP SIZES MAY VARY DEPENDING ON THE FINAL SIZES OF YOUR WIRE BUNDLES.

R6 ZONE B10: F-806-L WAS F-806-L; ZONE D9: 8 1/8 WAS 6 7/16 1/03	
R5 UPDATED DETAILS G, H, J, & K TO REFLECT CURRENT VERSION OF 12/01	
F-804; ZONES C7 & C5: DIMENSION "2 5/16" WAS "2 1/4"; ZONES C8 & C4: DIMENSION "2" WAS "1 7/8"; ZONES C3: DIMENSION "2" WAS "1 3/4".	
R4 B 1/2 WAS 7 1/2. 2 1/2 WAS 1 1/2. 0.063x1/2 WAS 0.063x1/2x12. 5/01	
R3 START RELAY ES 24021 WAS ES 24022. ADDED P22 & P21 P/N'S. 2/00	
R2 RELOCATED BATTERY CABLE PENETRATION HOLES IN F-802A-L AND F-802B-L 9/2/89	
R1 REVISED DRAWING 4/26/89	
VAN'S AIRCRAFT, INC. 14401 NE KEL RD. ALBANY, OR 97002 USA	
RV-8/8A WIRING HARNESS INSTALLATION	
DATE DRAWN: 1/18/99	DRN: RV-8/8A
TOLERANCES: NONE	INCHES
(UNLESS OTHERWISE SPECIFIED)	SCALE: AS NOTED
PATH: \FILES\NAME: G:\V2 OTHER\PARTS-OPTIONAL\PLANS\OP-11.DWG	D-SIZE ORIGINAL