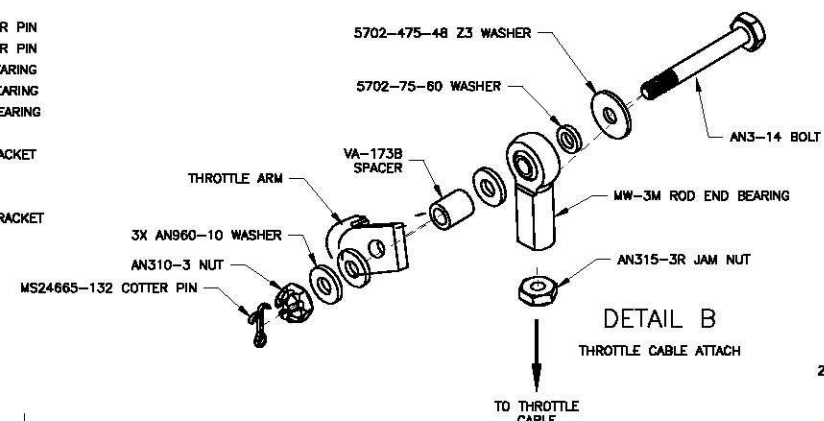
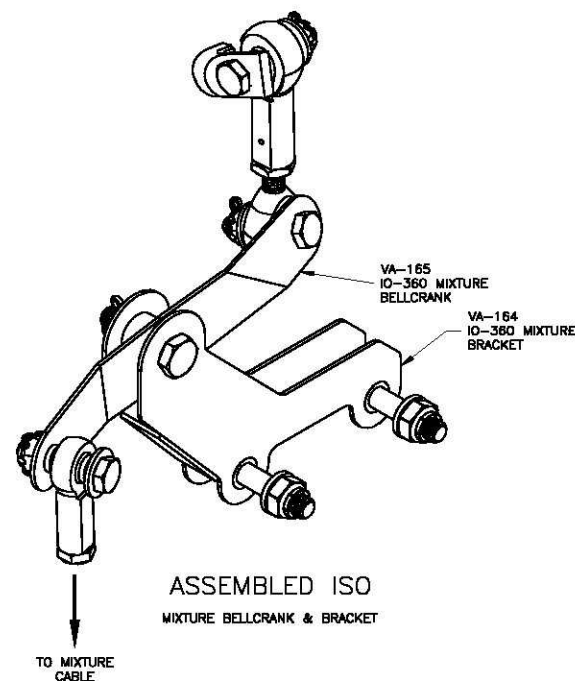
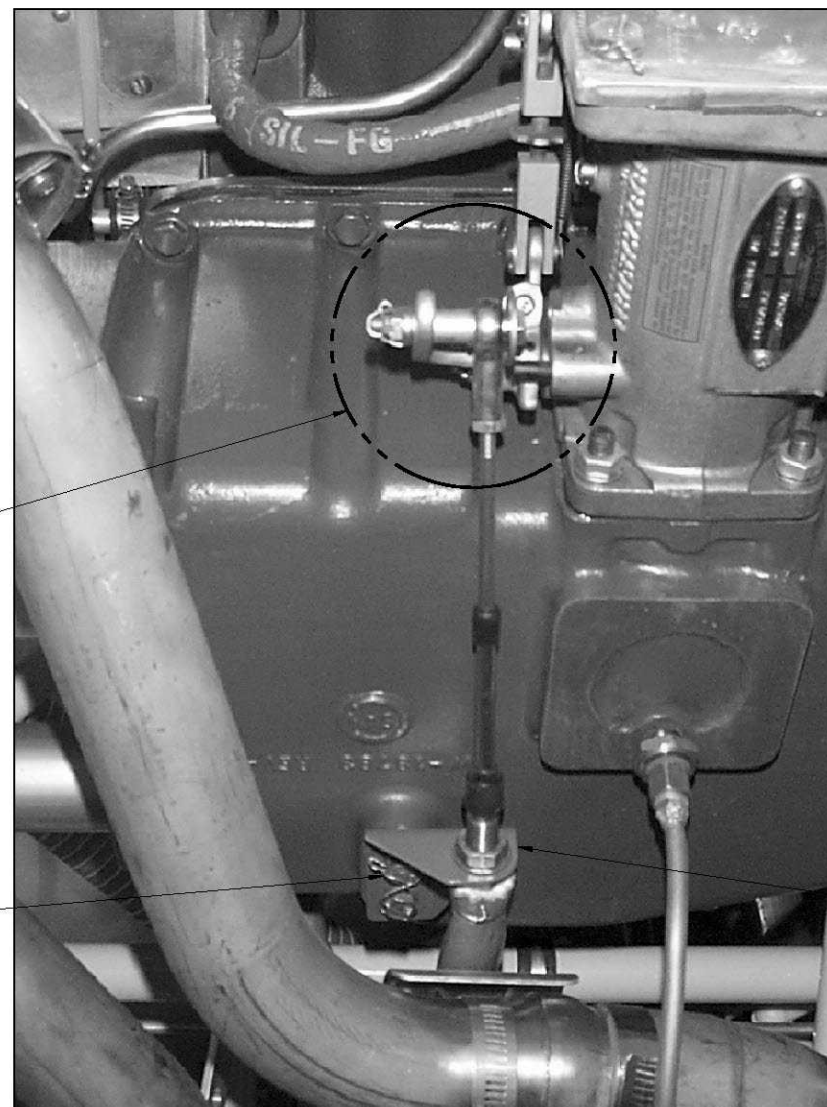
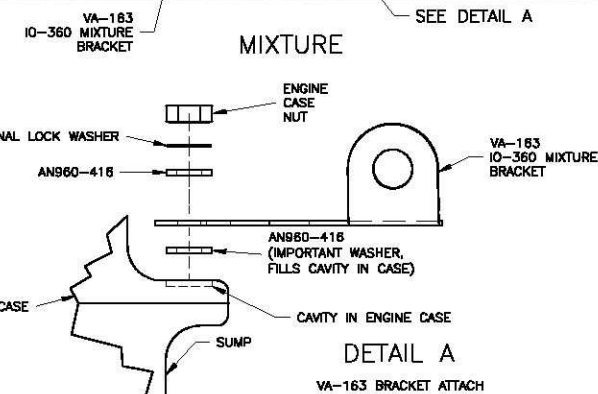
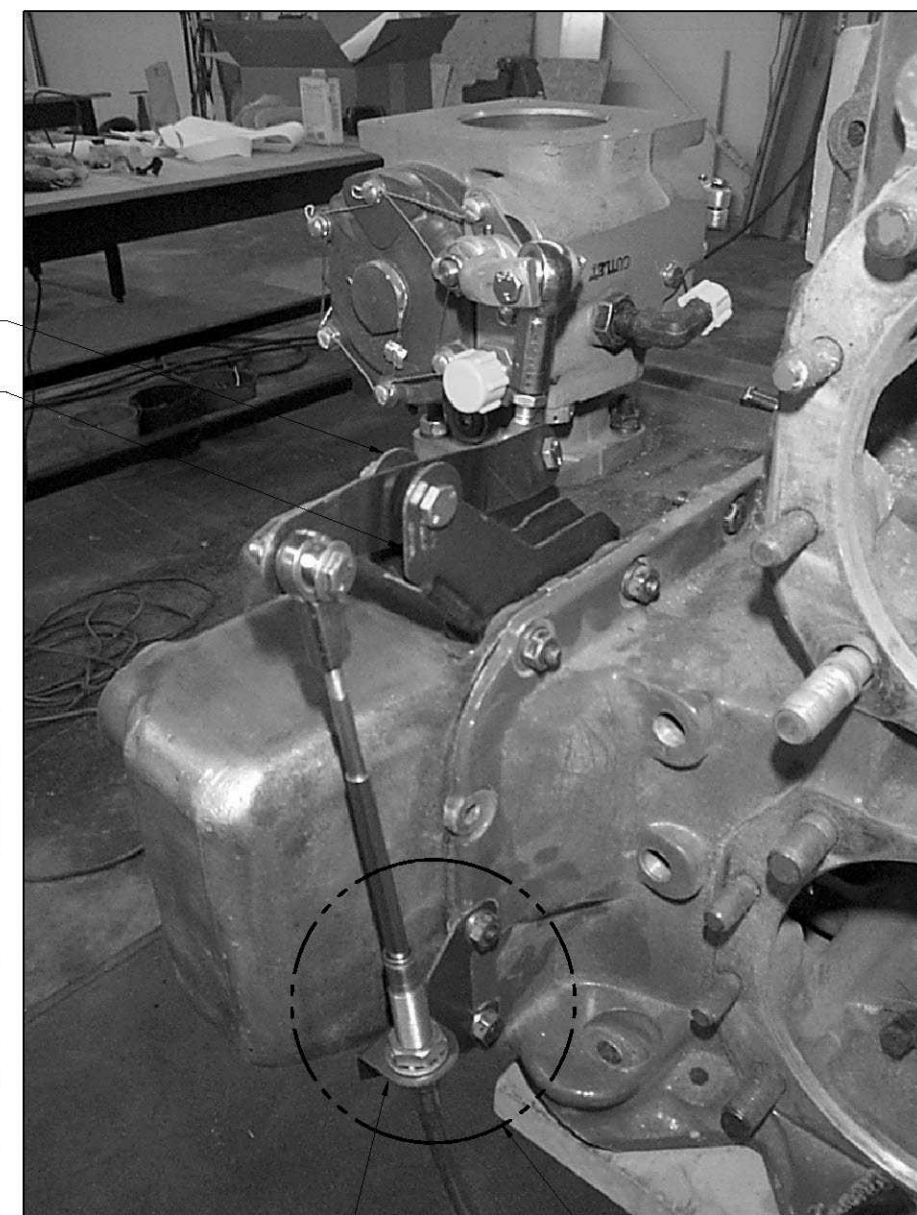


BILL OF MATERIAL

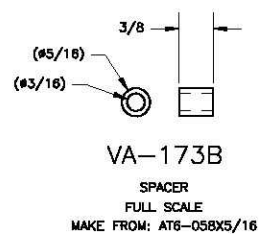
QTY	ITEM
2	1/4X20X1/2 BOLT
2	AN3-10 BOLT
1	AN3-11 BOLT
1	AN3-14 BOLT
1	AN4-10 BOLT
2	AN4-15A BOLT
11	5702-75-80 WASHER
4	5702-475-48 Z3 WASHER
4	AN960-10 WASHER
11	AN960-416 WASHER
2	AN936A416 INTERNAL LOCK WASHER
4	AN310-3 NUT
1	AN310-4 NUT
2	AN315-3R NUT
1	AN316-4 NUT
2	MS21045-4 NUT
4	MS24665-132 COTTER PIN
1	MS24665-208 COTTER PIN
2	MW-3M ROD END BEARING
1	F3414M ROD END BEARING
1	M3414M ROD END BEARING
1	C-670 BUSHING
1	VA-163 MIXTURE BRACKET
1	VA-164 BRACKET
1	VA-165 BELLCRANK
1	VA-173 THROTTLE BRACKET
1	AT6-058X5/16X4

EXPLODED ISO
MIXTURE BELLCRANK & BRACKETDETAIL B
THROTTLE CABLE ATTACH2X 1/4X20X1/2 BOLT
(DRILL HEAD FOR SAFETY WIRE)ASSEMBLED ISO
MIXTURE BELLCRANK & BRACKETTO MIXTURE
CABLE

THROTTLE



MIXTURE

DETAIL A
VA-163 BRACKET ATTACH

VA-173B

SPACER
FULL SCALE
MAKE FROM: AT6-058X5/16

R2 ZONES D10,D9 AN4-15A WAS AN4-12A;
ZONES C10,C8 DELETED AN970-3 ADDED WASHER 5702-475-48 Z3;
ZONES E8,F9,F10,C8 DELETED NOTE 1;
ZONES D9 & E7 ADDED 2 AN960-416 & "ADD AS REQ'D" CALLOUT;
ZONES C8,E9,E10,F7,F9,G8,G10 DELETE A3135-017-24A ADD WASHER
5702-475-48 Z3 6/23/04
R11 ZONES D10 AND B7 AN3-14 WAS AN3-20 6/19/02

VAN'S AIRCRAFT, INC. 14401 NE KEL RD.
ALBORA, OR 97002 USAIO-360 MIXTURE BELLCRANK
& THROTTLE BRACKET

DATE DRAWN: 3/8/01

DRAWN BY: RAN JOHNSON

TOLERANCES: NONE

(UNLESS OTHERWISE SPECIFIED)

PATH:FILENAME: QVZ OTHER(PARTS OPTIONAL)\PLANS\OP-22.DWG

UNITS:

INCHES

SCALE: AS NOTED

D-SIZE ORIGINAL

RV-7,8

OP-22