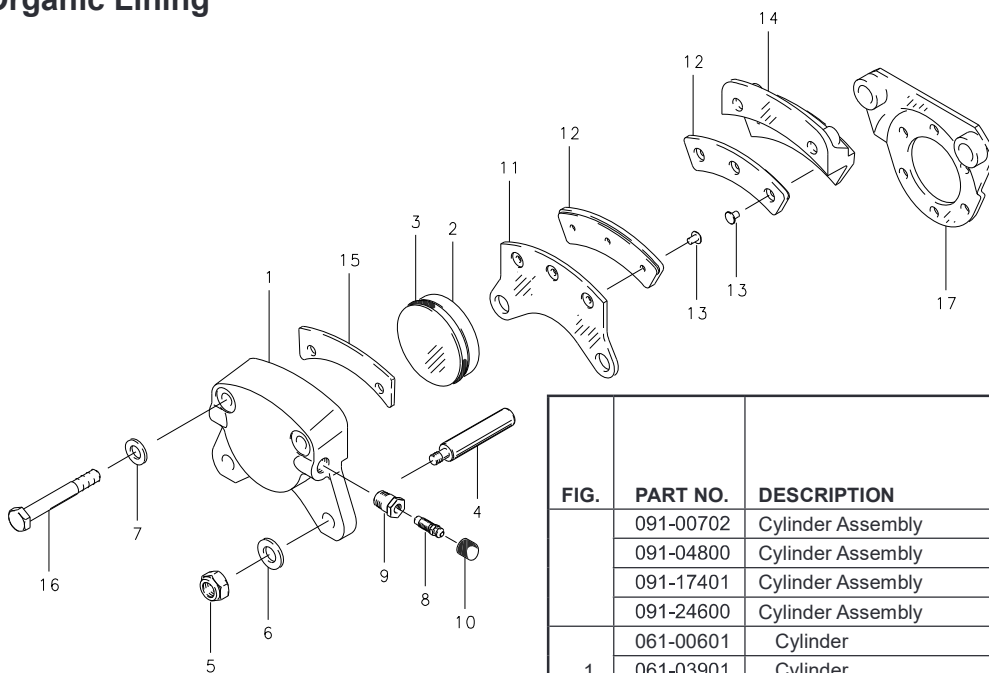


Catalog AWBPC0001-25/USA

Illustrated Parts List[Return to
Table of Contents](#)**Brake Assembly – 5" External
Single Cylinder, Single Piston****30-9, 30-9A, 30-9C, 30-9D, 30-9E, 30-181A, 30-308****Organic Lining****NOTES:**

(1) 199-200 Kit Upgrade converts 30-181 to 30-181A. TSO approved per PRM58.

(2) Inactive – superseded by 30-9C.

| | | | PER ASSY. | | | | | | |
|------|-----------|----------------------|-----------|-------|-------|-------|-------|---------|--------|
| FIG. | PART NO. | DESCRIPTION | 30-9 | 30-9A | 30-9C | 30-9D | 30-9E | 30-181A | 30-308 |
| | 091-00702 | Cylinder Assembly | 1 | | | 1 | 1 | | |
| | 091-04800 | Cylinder Assembly | | 1 | 1 | | | | |
| | 091-17401 | Cylinder Assembly | | | | | | 1 | |
| | 091-24600 | Cylinder Assembly | | | | | | | 1 |
| 1 | 061-00601 | Cylinder | 1 | | 1 | 1 | 1 | 1 | |
| | 061-03901 | Cylinder | | 1 | | | | | |
| | 061-20100 | Cylinder | | | | | | | 1 |
| | 092-00200 | Piston Assembly | 1 | 1 | 1 | 1 | 1 | 1 | 1 |
| 2 | 062-00300 | Piston | 1 | 1 | 1 | 1 | 1 | 1 | 1 |
| 3 | 101-02300 | O-Ring (MS28775-218) | 1 | 1 | 1 | 1 | 1 | 1 | 1 |
| 4 | 069-00400 | Anchor Bolt | 2 | 2 | 2 | 2 | 2 | 2 | 2 |
| 5 | 094-10300 | Nut (MS21044-N4) | 2 | 2 | 2 | 2 | 2 | 2 | 2 |
| 6 | 095-10400 | Washer (AN960-416) | 2 | 2 | 2 | 2 | 2 | 2 | 4 |
| 7 | 095-10200 | Washer (AN960-416L) | | 2 | | | | 2 | |
| | 095-10400 | Washer (AN960-416) | 2 | | 2 | 2 | 2 | | |
| 8 | 079-00300 | Screw-Bleeder | 1 | 1 | 1 | 1 | 1 | 1 | 1 |
| 9 | 081-00100 | Seat-Bleeder | 1 | 1 | 1 | 1 | 1 | 1 | 1 |
| 10 | 183-00100 | Cap-Bleeder | 1 | 1 | 1 | 1 | 1 | 1 | 1 |
| | 073-00300 | Pressure Plate Assy | 1 | 1 | 1 | 1 | 1 | 1 | |
| | 073-12200 | Pressure Plate Assy | | | | | | | 1 |
| 11 | 063-00500 | Pressure Plate | 1 | 1 | 1 | 1 | 1 | 1 | 1 |
| 12 | 066-10600 | Lining | 1 | 1 | 1 | 1 | 1 | 1 | |
| | 066-14800 | Lining | | | | | | | 1 |
| 13 | 105-00200 | Rivet | 3 | 3 | 3 | 3 | 3 | 3 | 3 |
| | 074-00200 | Back Plate Assy | 1 | 1 | 1 | 1 | 1 | 1 | |
| | 074-08300 | Back Plate Assy | | | | | | | 1 |
| 14 | 064-00500 | Back Plate | 1 | 1 | 1 | 1 | 1 | 1 | 1 |
| 12 | 066-10600 | Lining | 1 | 1 | 1 | 1 | 1 | 1 | |
| | 066-14800 | Lining | | | | | | | 1 |
| 13 | 105-00200 | Rivet | 3 | 3 | 3 | 3 | 3 | 3 | 3 |
| 15 | 068-00401 | Shim | | | | | | 1 | |
| 16 | 103-12100 | Bolt (AN4H15A) | 2 | 2 | 2 | 2 | 2 | | 2 |
| | 103-11500 | Bolt | | | | | | 2 | |
| 17 | 075-00800 | Torque Plate Assy | 1 | 1 | 1 | | | 1 | 1 |
| | 075-19300 | Torque Plate Assy | | | | 1 | | | |
| | 075-19900 | Torque Plate Assy | | | | | 1 | | |

Cleveland
Wheels & Brakes

