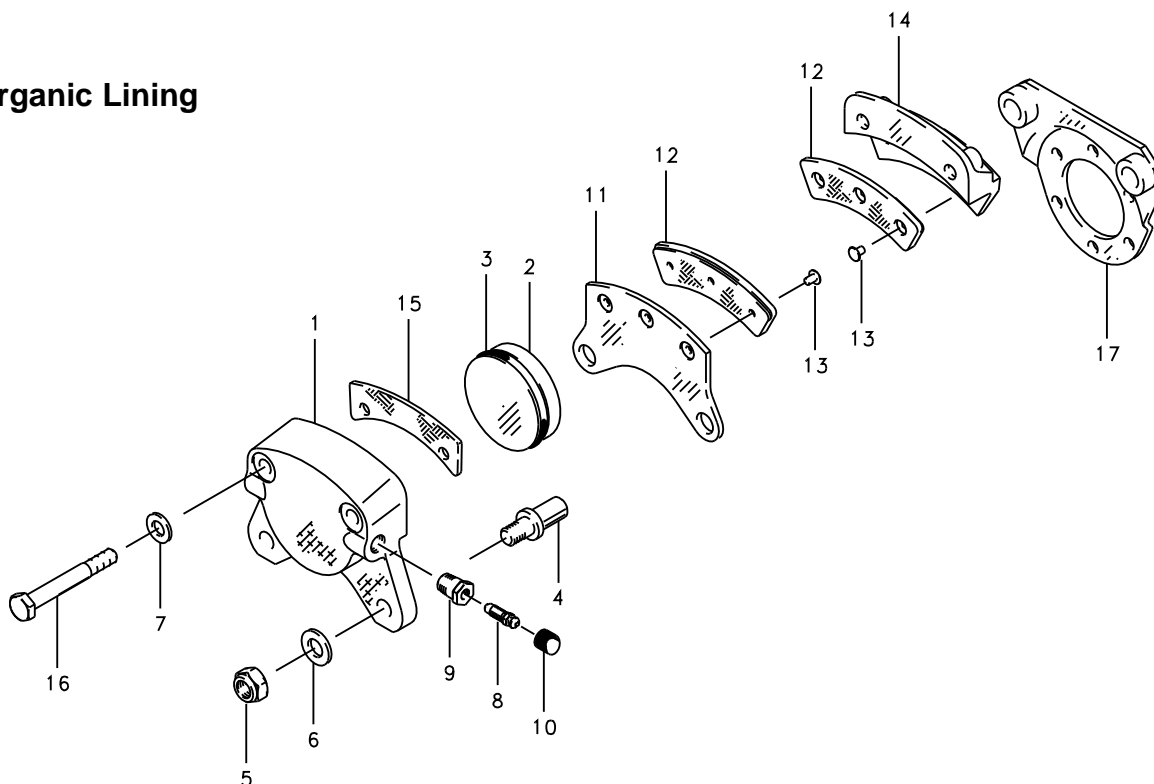


30-9, 30-9A, 30-9C, 30-9D, 30-181A

## Organic Lining



### Assy. Number

- A) 30-9  
B) 30-9A (2)  
C) 30-9C  
D) 30-9D  
E) 30-181A (1)

### NOTES:

- (1) 30-181A supersedes 30-181 per [PRM 58](#).  
(2) Inactive – superseded by 30-9C.

FIG.	PART NUMBER	DESCRIPTION	QTY. PER ASSY.				
			A	B	C	D	E
1	091-00702	Cylinder Assy.	1			1	
	091-04800	Cylinder Assy.		1	1		
	091-17401	Cylinder Assy.					1
	061-00601	Cylinder	1			1	1
	061-03901	Cylinder		1	1		
	092-00200	Piston Assy.	1	1	1	1	1
2	062-00300	Piston	1	1	1	1	1
3	101-02300	O-Ring (MS28775-218)	1	1	1	1	1
4	069-00400	Anchor Bolt	2	2	2	2	2
5	094-10300	Nut (MS21044-N4)	2	2	2	2	2
6	095-10400	Washer (AN960-4-16)	2	2	2	2	2
7	095-10200	Washer (AN960-416L)	2	2	2	2	2
8	079-00300	Screw-Bleeder	1	1	1	1	1
9	081-00100	Seat-Bleeder	1	1	1	1	1
10	183-00100	Cap-Bleeder	1	1	1	1	1
	073-00300	Pressure Plate Assy.	1	1	1	1	1
11	063-00500	Pressure Plate	1	1	1	1	1
12	066-10600	Lining	1	1	1	1	1
13	105-00200	Rivet	3	3	3	3	3
	074-00200	Back Plate Assy.	1	1	1	1	1
14	064-00500	Back Plate	1	1	1	1	1
12	066-10600	Lining	1	1	1	1	1
13	105-00200	Rivet	3	3	3	3	3
15	068-00401	Shim					1
16	103-12100	Bolt (AN4H15A)	2	2	2	2	
	103-11500	Bolt					2
17	075-00800	Torque Plate Assy.	1	1	1		1
	075-19300	Torque Plate Assy.				1	